

INSTALLATION INSTRUCTIONS

HUBRPXSUS Cable Suspension Clamp

Caution: Optical fiber cable is sensitive to excessive pulling, bending, and crushing forces. Please consult the cable manufacturer's specification sheet for proper handling of the cable.

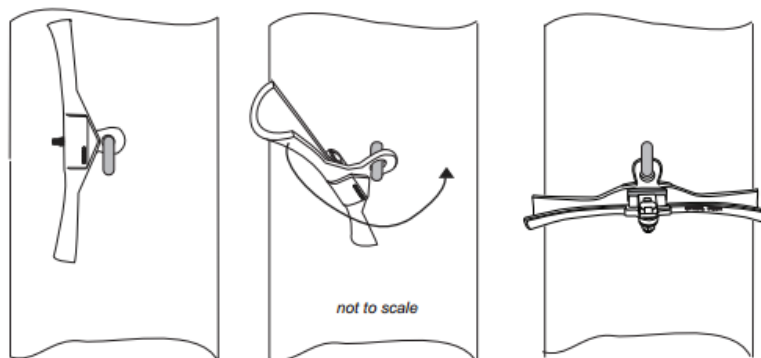
General: This procedure provides general installation instructions for the HUBRPXSUS suspension clamp. These instructions assume that the installer is familiar with optical fiber installations, safety procedures, and Corning Cable Systems specifications concerning the installation of Corning RPX® cable.

Hardware: Recommended hardware for proper installation

- J-HOOK Bolt Assembly (Part #: PSC208-0237)
OR
- Eye Nut & Shackle*
- ½" torque wrench or tool needed for hardware.

Installations Instructions:

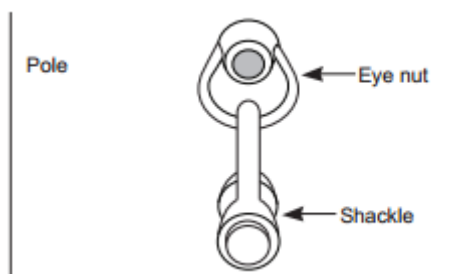
1. Pole mounting hardware must be in place, perpendicular to the direction of the cable line.
2. Hold the suspension clamp with the "HUBBELL" lettering facing away from the pole. Turn the suspension clamp 90 degrees vertically and slide the clamp's eyehole onto the j-hook until the open cable channel is facing away from the pole.



INSTALLATION INSTRUCTIONS

HUBRPXSUS Cable Suspension Clamp

*Note: If using eye nut and shackle combination, verify that the eye nut opening is horizontal to the cable direction. Insert shackle through eye nut, verifying that the shackle opening is parallel to the cable direction. Place pin through shackle and suspension clamp's eyehole. Verify that pin is in place and secured.



“OPTICAL FIBER” lettering should be facing away from the pole and toward the installer.

3. Loosen the captive nut on the keeper and turn 180 degrees, leaving the cable channel open.
4. Remove the cable from the temporary, supporting hardware. Place RPX® cable into the suspension clamp's cable channel.
5. Rotate the keeper 180 degrees over the cable inside the channel and clamp down. Tighten the nut to 15 ft/lb (180 in/lb). **DO NOT OVER TORQUE!!! OVER TORQUE WILL CAUSE STAINLESS STEEL HARDWARE TO GALL!!!**